

Campus SX™

User Guide



PHONAK
hearing systems

CE 0681 !

Welcome

Campus SX is a highly flexible multi-frequency FM transmitter which has been developed for use in any educational applications. It also performs excellently in other settings.

To obtain maximum benefit from the Campus SX transmitter and its comprehensive features, please read this user guide carefully. Ask your hearing care professional if you have any questions.

Phonak wishes you much hearing enjoyment with Campus SX.

Please also check www.eSchoolDesk.com (chapter 'How to use FM'), for additional Campus SX and MicroBoom instruction.

Contents

Instrument description	6
Campus SX	6
MicroBoom (optional)	8
MM8 (optional)	9
<hr/>	
How your Campus SX works	10
<hr/>	
Charging Campus SX	12
Standard charging	12
Charging multiple batteries (optional)	16
<hr/>	
Getting started	17
Wearing Campus SX	17
Switching Campus SX on	21
<hr/>	
Microphone muting	22
<hr/>	
Changing the channel	23
<hr/>	
Keypad lock	25
<hr/>	
Connecting to a television	26
<hr/>	
Connecting another microphone	28
<hr/>	

Changing the battery	30
Using the Campus SX belt set (optional)	34
Operating range	35
FM receivers	36
Principle benefits of Phonak multi-frequency receivers	36
Switch Settings on MicroMLxS	38
WallPilot (optional)	39
Troubleshooting	40
Important points	42
Declaration of conformity	44
Service and warranty	46
Phonak distributors worldwide	48

Instrument description

Campus SX

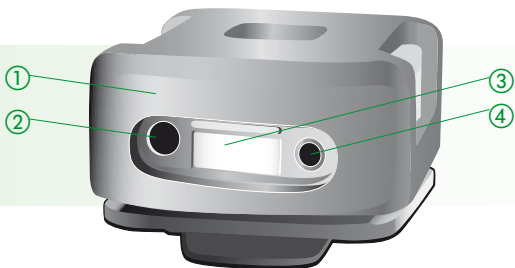
- ① On/Off (long press) and Microphone muting (short press)
- ② Direct frequency synchronization
- ③ Channel selection



LCD

- ① Keypad lock
- ② FM channel in use
- ③ Battery status indication





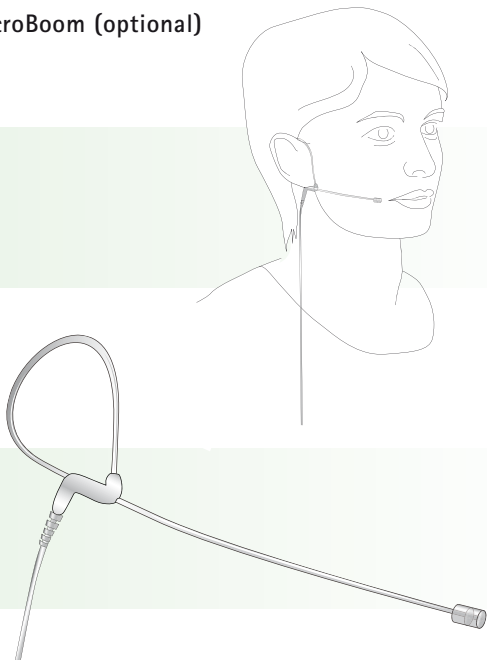
- ① Rubber coat
- ② Audio input socket
- ③ Label for your initials
- ④ Charging socket (red ring)



- ① Clip

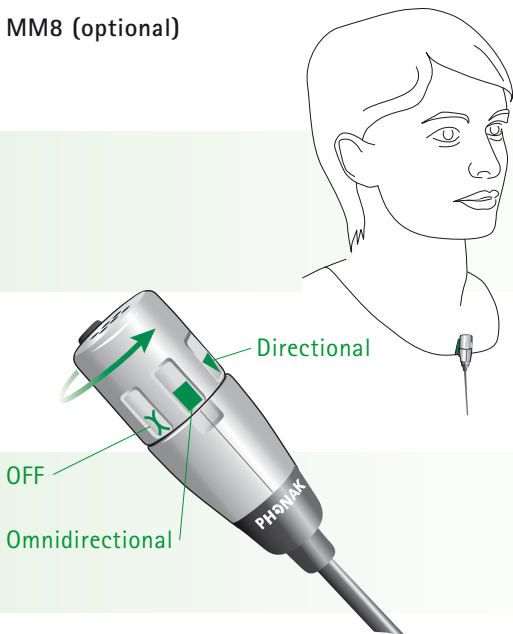
Instrument description

MicroBoom (optional)



MicroBoom is a new miniature microphone, especially designed for use in schools and in connection with Campus SX. See details on page 19.

MM8 (optional)



MM8 is a very flexible miniature lapel microphone which can be used in an omnidirectional or directional mode. See details on page 18.

How your Campus SX works



The teacher is wearing Campus SX with the MicroBoom or MM8 microphone.

The children are wearing hearing instruments or speech processors with attached Phonak FM receivers.

The Campus SX picks up the teachers voice through the MicroBoom or the MM8 microphone and instantly relays it to the children wearing Phonak FM receivers. Even in places where it is difficult to understand with hearing instruments alone and over distance, Campus SX will always provide a loud and clear speech signal.

Since the teacher's voice is sent wirelessly to the children, the distance between the teacher and the children becomes less important. Children sitting in the last row will understand as easily as children sitting in the front row.

Charging Campus SX



The battery is almost empty and needs to be charged as soon as possible.



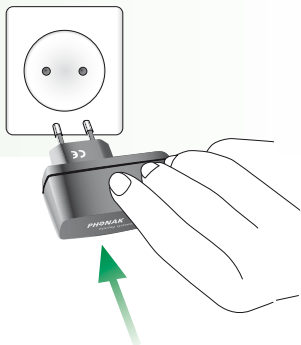
The battery is completely exhausted and needs to be charged immediately.


Standard charging

The Campus SX can be charged while switched off or while switched on, e.g. while transmitting the sound from the TV set.

- a) Fully charge the battery of the Campus SX before using the transmitter for the first time. An empty Campus SX battery is
- 80% charged after 3.5 hours and
 - 100% charged in 4.5 hours
- if the Campus SX is switched off during charging. If Campus SX is in use during charging, it is 100% charged in about 6 hours.

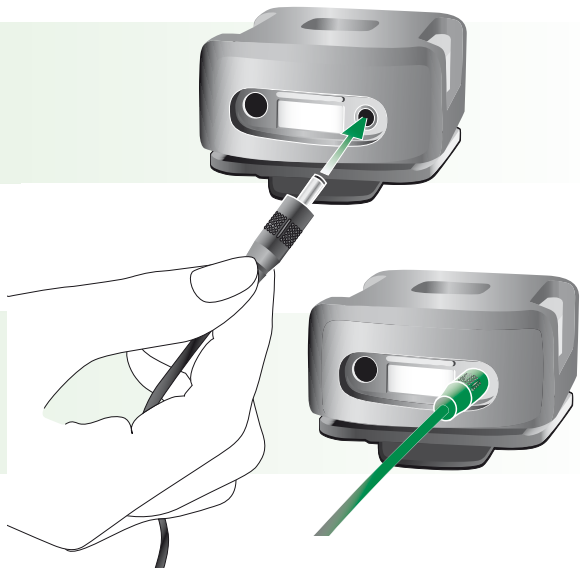
Plug the Campus SX battery charger into an easy accessible wall power socket.



 Use original Phonak charging units only

Charging Campus SX

- b) Plug the connector from the charger into the red marked charging socket underneath your Campus SX.



- c) The blinking battery symbol in the LCD indicates that the Campus SX is charging.



The three battery segments are moving fast (blinking)

Meaning

Campus SX is fast charging


Three battery segments stay visible and the battery case is blinking

Campus SX is fully charged and the charger can be detached

Charging Campus SX

If the charger from the Campus S (the former school transmitter) is used, the three battery segments are moving slowly (blinking). This means the Campus SX is slowly charging and needs about 12 hours of charging time.

Your Campus SX must be recharged after approximately 12 hours of operation.

 The Campus SX may produce heat while charging. If your Campus SX will not be in use for more than 2 weeks, open the battery door (see page 30).

Charging multiple batteries (optional)

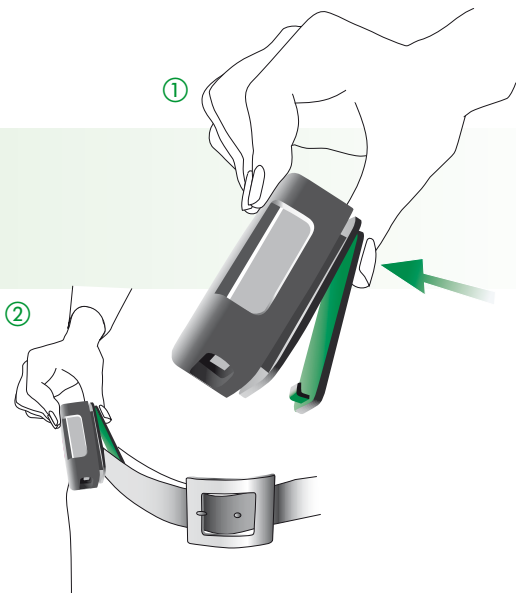
There is a multi-charger available which allows charging up to four batteries in parallel. By using the multi-charger, the charging time is about 12 hours (no fast charging). Please ask your Phonak dealer for this charger.

To remove the battery from the Campus SX, see page 32.

Getting started

Wearing Campus SX

- a) Open the clip ① and fix Campus SX on your belt ② or on your trousers. Make sure it holds safely. If not, use the optional Campus SX belt (see page 34).

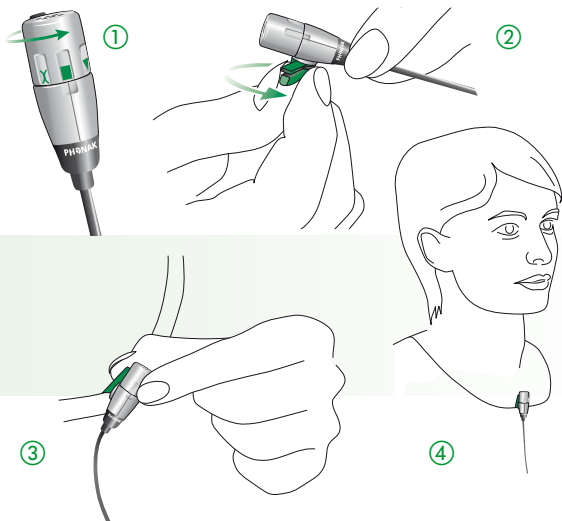


Getting started

b) Attach the microphone

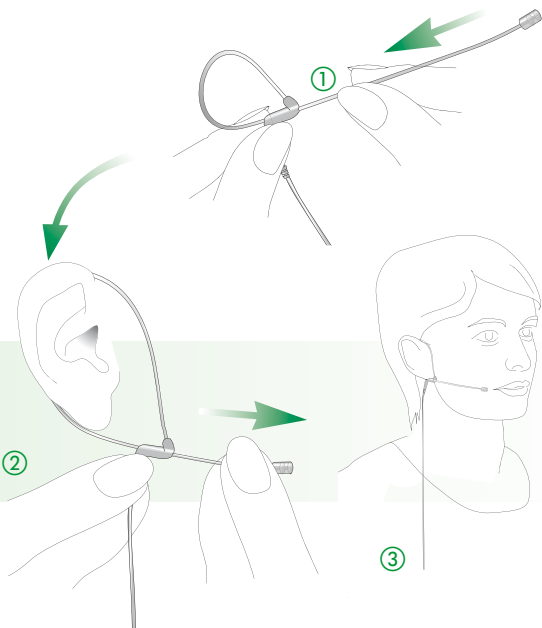
If using the MM8 lapel microphone:

Make sure the MM8 is switched to omnidirectional or directional mode ①. Turn the clip on the MM8 according your needs ② and fix it on your shirt ③. Make sure the distance between the microphone and your mouth is approximately 20cm/8 inches ④.



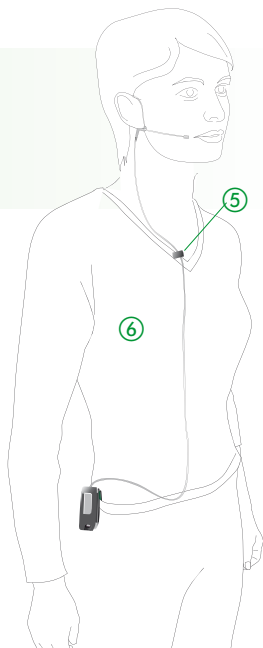
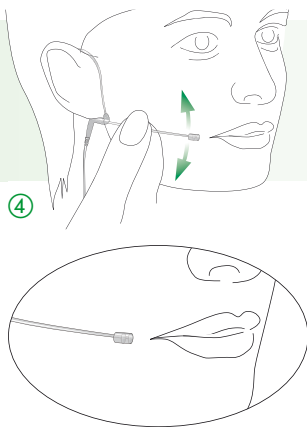
If using the MicroBoom microphone:

Slightly increase the loop diameter ① and put it on your left or right ear ②. Then decrease the loop diameter by slowly pulling in the direction of the arrow ③ until it holds safe and is comfortable to wear.



Getting started

Then slightly adjust the MicroBoom on the ear ④ to have the microphone approximately at the level of the mouth. Fix the microphone cable with the clip ⑤ on your clothes. Wear MicroBoom as depicted ⑥. The microphone does not need to be directly in front of the mouth!



⚠ Do not bend or twist the MicroBoom. Make sure it is safely stored.

Switching Campus SX on

Switch the Campus SX on by pressing the on/off button for about two seconds.



If the Campus SX is switched on, the channel number and the battery indication are shown in the LCD.

Microphone muting

For a quick conversation with another teacher which is not meant for the children's ears, the microphone attached to the Campus SX can easily be muted.



To mute the attached microphone, the Campus SX needs to be switched on. Briefly press the on/off button (A) until the small rectangle (B) is displayed. To deactivate the microphone mute function, briefly press the on/off button again. The rectangle disappears and the channel number is displayed again.

⚠ Please note that a long press (2 seconds) on the on/off button switches the Campus SX off.

- It is not possible to change the frequency while the microphone is muted.
- The microphone mute function only controls the attached microphone. The audio input socket is useable when the microphone is muted.

Changing the channel

Campus SX is a multi-channel transmitter and allows changing the channels easily. Make sure that children using the Phonak FM receivers are always on the same channel. Otherwise, they cannot hear your voice.




- ① Press one of the channel selection buttons to change the channel in the transmitter. The new channel number is displayed in the LCD.

▲ selects a higher channel

▼ selects a lower channel

Changing the channel

- ② If the FM receivers of the child are not yet on the new frequency,
- go to the child,
 - hold the Campus SX close to the child (Distance to the FM receivers: <1m/3 feet) and press the synchronization button on the Campus SX  for one second.

Please note that no receivers other than Phonak multi-frequency receivers (MicroMLxS, MLxS, ML8S, ML9S, MicroLink Freedom, MLxS Baha, EduLink S, MyLink, and future Phonak receivers) can be synchronized by Campus SX.

After switching the multi-frequency receiver off and on, the receiver goes back to its default channel.

Keypad lock

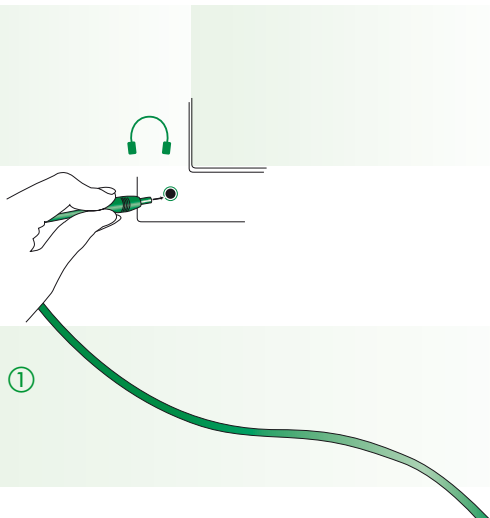
As with cell phones, Campus SX provides a keypad lock, to prevent inadvertent operation of the controls.



- **To lock the controls:**
Campus SX must be switched on to activate this feature. Simultaneously press the two buttons as depicted for about 1 second. The watchman symbol in the LCD shows that the keypad lock is activated.
- **To unlock the controls:**
Simultaneously press the same two keys again for about 1 second. When the watchman symbol disappears, the keypad lock is deactivated.

Connecting to a television

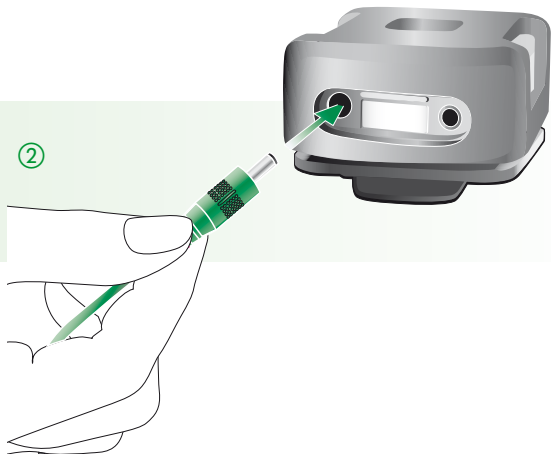
Campus SX can directly be connected to audio equipment like televisions, CD and MP3 players, and computers with audio outputs.



- ① Plug the audio cable (standard accessory) into the headphone output of your audio equipment.
- ② Plug the other end of the audio cable into the audio input underneath your Campus SX.

- ③ Mute the microphone which is attached to the Campus SX (see page 22). If you want to give comments to the children in parallel to the other audio input, deactivate the mute function and talk into the microphone.

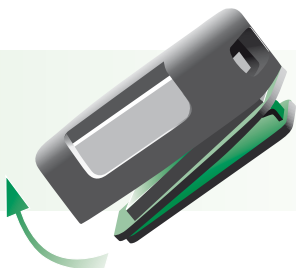
⚠ Since Campus SX uses the microphone cable as an antenna, unwind the microphone cable for an optimal operating range.



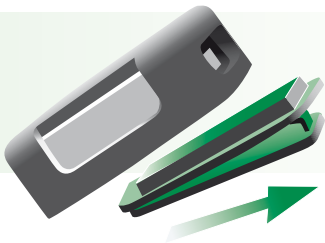
Connecting another microphone

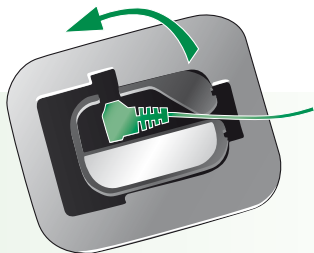
To attach another Phonak microphone to the Campus SX, proceed as follow:

- a) Unwind the existing microphone
- b) Open the clip carefully

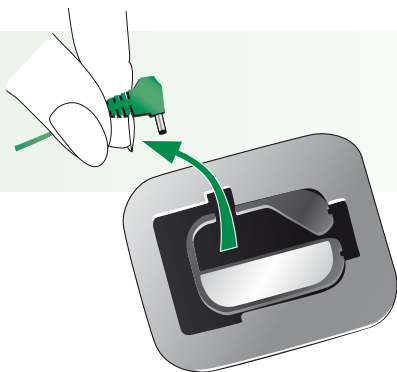


- c) Remove the clip from the Campus SX





d) Remove the microphone



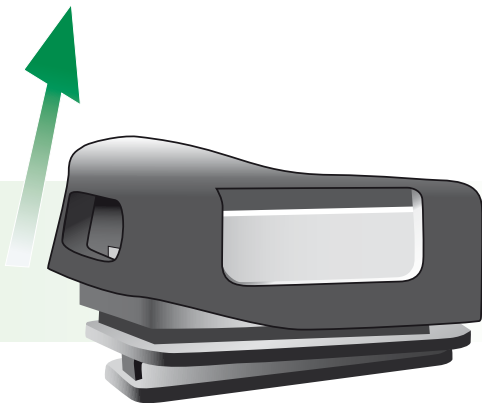
e) For attaching the microphone, proceed in reverse order.

Changing the battery

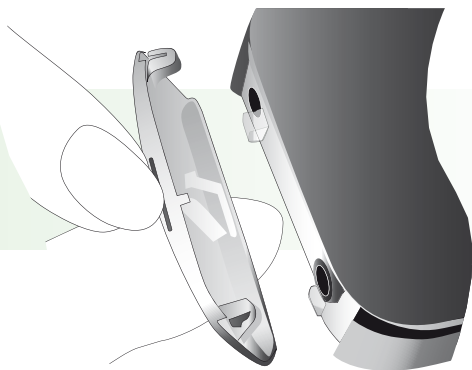
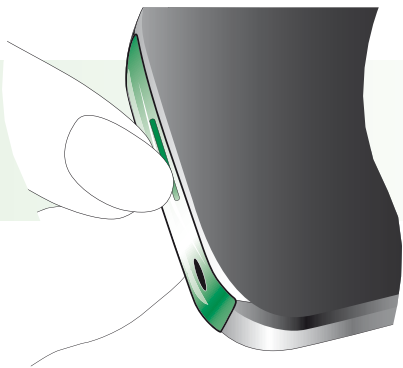
A battery can be re-charged between 500 and 700 times. If the operating time from a fully charged battery becomes lower, the battery should be replaced by a new one.

Proceed as follow:

- a) Unwind the Microphone
- b) Slightly remove the rubber coat on the side of the battery compartment or remove it completely

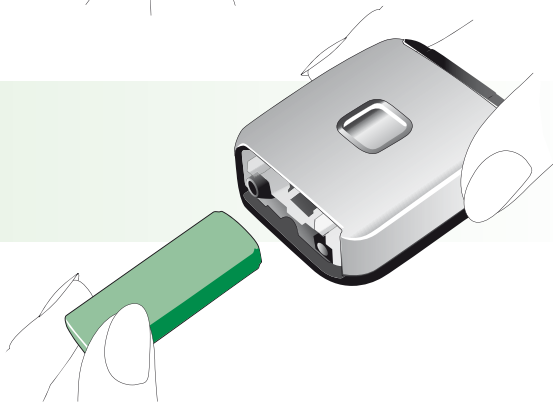
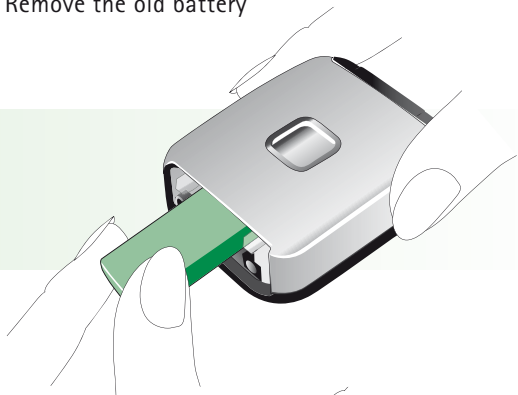


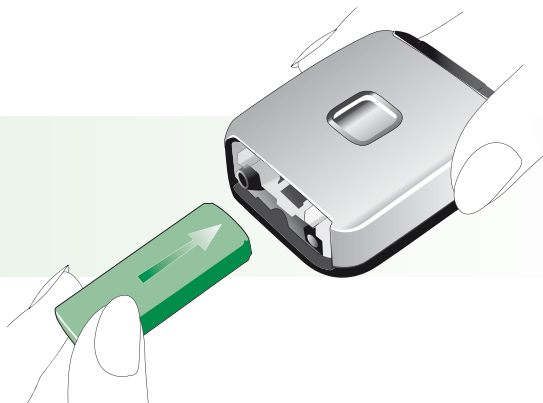
c) Remove the clip from the Campus SX



Changing the battery

d) Remove the old battery





- e) To insert the new battery, proceed in reverse order. Make sure the new battery is fully charged before using it the first time (see page 12).

Using the Campus SX belt set (optional)

The Campus SX belt set is an optional set for teachers unable to safely attach the Campus SX to their clothing. For example, using the Campus SX during sport lessons.

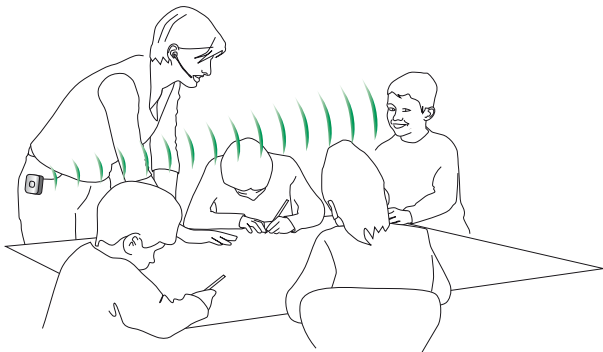
The Campus SX belt set consists of two stylish and lasting woven fabric belts with a holster to secure the Campus SX. It is the safest way to wear the Campus SX and prevents the Campus SX from falling of, even in extreme situations.

Please ask your Phonak dealer for this Campus SX belt set.



Operating range

The operating range is the distance between the teacher and children using the Phonak FM receivers.



- Unwind the microphone cable for optimal operating range.
- The operating range is typically more than 10 meters (30 feet) inside and more than 30 meters (90 feet) outside.

⚠ High-power electronic equipment, larger electronic installations and metallic structures may affect and significantly reduce the operating range.

FM receivers

Principle benefits of Phonak multi-frequency receivers

- **Default channel**
Phonak multi-frequency receivers are programmed with a standard default channel activated at startup. It can be modified at Phonak service centers.
- **Frequency synchronization**
Campus SX can change the actual channel of the Phonak multi-frequency receivers directly over the air (see page 24). Changing the channel is quick and easy, for example when there are nearby FM users on the same channel.

After switching the multi-frequency receiver off and on, the receiver goes back in its default channel.

- **Standby mode for power saving**

This function helps economize on power. Switch off the transmitter, and about 40 seconds later, your receivers automatically enter standby mode.

The receivers consume practically no power in standby mode. They detect when the Campus SX switches on again and automatically resume normal operation mode.

Switch Settings on MicroMLxS



For Phonak hearing instruments:

Please refer to the user guide of your Phonak hearing instruments.

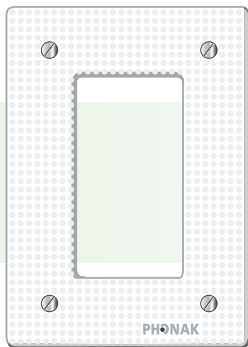
For all other brands:

Ask your hearing care professional about the right switch settings.

WallPilot (optional)

The WallPilot is a remote frequency synchronizer which is placed near the door to tune the Phonak multi-frequency receivers of children entering the class room to the class room frequency.

It is mainly used in schools or other places where FM is used in more than one room and children are moving from one room to another.



Please ask your Phonak dealer for the WallPilot.

Troubleshooting

Situation

"E8" is displayed in the LCD while the charger is connected.

"E9" is displayed in the LCD when the Campus SX is on.

Most probable cause

The battery is defective.

Remedy

Replace the battery
(see page 30).

The Campus SX needs
servicing.

Contact the responsible
hearing care professional or
the Phonak service center.

Important points

- Do not use two transmitters on the same FM channel.
- Do not use water or fluids for cleaning. It is recommended to use Phonak CleanLine products. Your hearing care professional will be glad to advise you.
- Use original Phonak accessories only.
- Be aware that FM signals might also be picked up and overheard by other receivers.
- Before using Campus SX in another country, contact your hearing care professional to make sure your radio channels are permitted in that country.
- Campus SX may only be repaired at an authorized service center.



The symbol with the crossed out disposal bin indicates that this device should not be treated as household waste. Please hand over your old or unused device to the applicable collection point for the recycling of electrical and electronic equipment or bring your old device to your hearing care professional for appropriate disposal. By ensuring this product is disposed of correctly, you will help prevent potential negative effects on the environment and human health.

⚠ Only use batteries delivered by Phonak. Risk of explosion if battery is replaced by an incorrect type. Dispose of used batteries according to the instructions.

Declaration of conformity


Hereby, Phonak Communications AG, declares that the Campus SX multi-frequency transmitter is in compliance with the essential requirements and other relevant provisions of Directive 1999/5/EC. To obtain a copy of the Declaration of conformity, please contact the local Phonak AG representative whose address can be taken from the list of Phonak distributors worldwide.

This device complies with RSS 210 of Industry Canada. Operation is subject to the following two conditions:
(1) This device does not cause harmful interference, and
(2) this device must accept any interference received, including interference that may cause undesired operation.

This transmitter is authorized by rule under the Low Power Radio Service (47 C.F.R. Part 95) and must not cause harmful interference to TV reception or United States Navy SPASUR installations. You do not need an FCC license to operate this transmitter. This transmitter may only be used to provide: auditory assistance to persons with disabilities, persons who require language translation, or persons in educational settings; health care services to the ill; law enforcement

tracking services under agreement with a law enforcement agency; or automated maritime telecommunications system (AMTS) network control communications. Two-way voice communications and all other types of uses not mentioned above are expressly prohibited.

This device may not interfere with TV reception or Federal Government radar.

 **Warning:** Changes or modifications made to this equipment not expressly approved by Phonak Inc. may void the user's authority to operate the equipment.

Service and warranty

Phonak provides a manufacturer's limited warranty for your Campus SX. This covers all manufacturing and material defects. Problems with Campus SX arising from improper handling or care and repairs made by an unauthorized party are not covered by the warranty. Please ask at the point of sale for full details of this warranty. The sales person will note the serial number of your Campus SX below. It will be needed in the event of a warranty repair.

Serial number Campus SX:

Date of purchase:

Phonak distributors worldwide

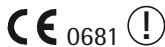
Group companies:	(detailed information on www.phonak.com)
Australia	Phonak Australasia Pty. Ltd. Baulkham Hills N. S. W. 2153
Austria	Hansaton Akustische Geräte GmbH 5020 Salzburg
Belgium	Lapperre N.V., 1702 Groot-Bijgaarden
Brazil	CAS Produtos Médicos, São Paulo – SP 04363-100
Canada	Phonak Canada Limited Mississauga, Ontario L5S 1V9
China	Phonak (Shanghai) Co. Ltd., Shanghai City 200233
Denmark	Phonak Danmark A/S, Nitvej 10 2000 Frederiksberg
France	Phonak France SA, 69500 Bron
Germany	Phonak GmbH, 70736 Fellbach-Oeffingen EC Representative
Italy	Phonak Italia S.r.l., 20159 Milano
Japan	Phonak Japan Co., Ltd., Tokyo 101-0044
Jordan	Phonak Middle East, 11181 Amman
Netherlands	Phonak B.V., 3439 ME Nieuwegein
New Zealand	Phonak New Zealand Ltd., Takapuna Auckland 9
Norway	Phonak AS, 0105 Oslo
Poland	Phonak Polska Sp. z o.o., 00-567 Warszawa
Spain	Phonak Ibérica S.A., 03008 Alicante
Sweden	Phonak AB, 117 43 Stockholm
Switzerland	Phonak AG, Phonak Schweiz, 8712 Stäfa
United Kingdom	Phonak UK Limited Warrington, Cheshire WA1 1PP
USA	Phonak LLC, Warrenville, IL 60555-3927

**Independent
general agents:**

A complete list of Phonak distributors is available at Phonak's Internet site: www.phonak.com. Please visit us or ask your hearing care professional for information.

Manufacturer:

Phonak AG, Laubisrütistrasse 28
CH-8712 Stäfa, Switzerland



Notes

A series of horizontal dotted lines for writing notes.

Notes

A series of horizontal dotted lines for writing notes.

Your hearing care professional:

www.phonak.com