

Cochlear™ Nucleus® 5 Euro Adaptor Instructions

1. Plug the wireless FM receiver into the Nucleus® Euro Accessory Adaptor, insert the thicker pin on the receiver into the wider hole on the adaptor. Put the receiver in the “double-dot” position.



2. Turn off the Nucleus 5 Sound Processor.
Turn on the Nucleus 5 Sound Processor.

OFF

Press and hold both buttons at the same time until you see the steady orange light

ON

Press and hold the lower button

Advanced Mode



OFF and ON
Press and hold

Simple Mode

3. Within 90 seconds, plug in the Nucleus Euro Accessory Adaptor into the sound processor accessory port.



Note: The Nucleus 5 CP810 Sound Processor is not compatible with the Phonak MLxi. Please consider using the Phonak MLxS, Micro MLxS or the Oticon R1 or R2.

Additional information is available online at www.CochlearAmericas.com/EuroAdaptor

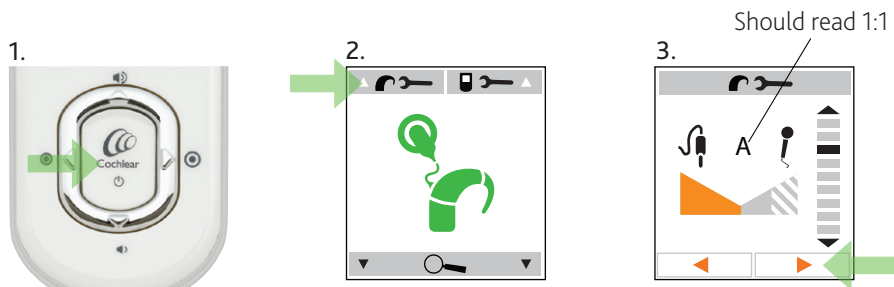
Hear now. And always



Cochlear recommends that the Mixing Ratio for accessories be set to 1:1 for use with FM systems.

To check the mixing ratio, pair the remote assistant with the sound processor (if it is not already paired).

1. Click the Cochlear home button.
2. Enter the sound processor menu by clicking the upper-left softkey.
3. Scroll through the menu to accessory mixing ratio using the down arrow and make sure it is set to 1:1.



To do a listening check with the Euro Adaptor, you will need the Nucleus 5 Monitor Earphones. These can be purchased at www.CochlearAmericas.com/Store if you do not have them.



If you have additional questions, please contact Hear Always at (800) 483-3123.

Nucleus is a registered trademark of Cochlear Limited. Cochlear, and the elliptical logo are trademarks of Cochlear Limited. The names of actual companies and products mentioned herein may be the trademarks of their respective owners.

FUN2019 ISS1 AUG10



Hear now. And always

