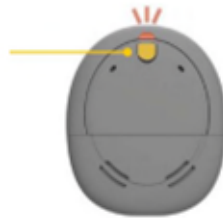


## Remote Microphone Connection Procedures for the Kanto with Cochlear Mini Mic 2+ as Transmitter

1. Pair the MM2+ to the Kanto (pairing only needs to be done once, unless MM2+ has been paired to another processor)
  - a. Turn off the Kanto by pressing and holding the button for 5 seconds until the indicator light turns a steady orange, then release the button.



- b. Turn on the MM2+ by pressing the ON/OFF button until the LED turns green, then release the button.



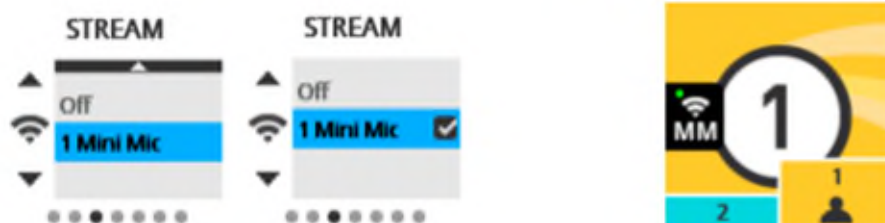
- c. With the tip of a ballpoint pen, press the pairing button once. The LED will flash yellow. Within 20 seconds, turn on the Kanto by pressing and holding the button until the LED turns green, then release the button.



2. The LED on the Kanto will blink blue, which indicates pairing is successful.
3. Activate **STREAMING** on the Kanto by pressing and holding the Kanto button for 3 seconds until a 3-tune melody is heard by the student and the LED blinks blue.
4. Functional Check
  - a. Have the student put the Kanto back on the implant.

- b. From a distance of at least 3 metres, cover your mouth and speak to the student via the MM2+.

Alternatively, **STREAMING** can be activated with the Remote Assistant. From the home screen, press the right arrow key until the STREAM screen is displayed. Press the down arrow key until "1 Mini Mic" is highlighted. Press OK. The LED on the Kanso will start blinking blue and the MM icon will appear on the home screen of the Remote Assistant.



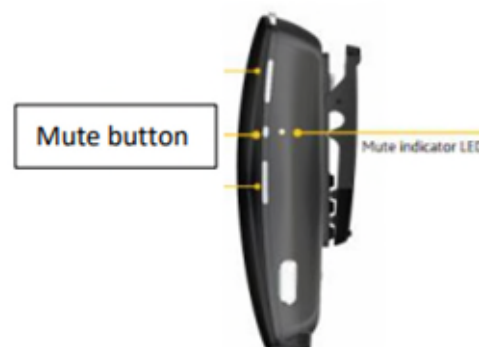
### Daily Classroom Routine:

Before instruction begins:

1. Teacher to position the MM2+ about 20 cm below their mouth by using either the neck loop or clip.
2. Turn on the MM2+.
3. Student to activate streaming on the Kanso.
4. Teacher to conduct functional check.

During short instruction breaks (e.g. quiet study, individual work time):

1. Teacher to mute the MM2+ by pressing the Mute button once.
2. LED on MM2+ with flash orange.
3. When instruction resumes, unmute the MM2+ by pressing the Mute button once. The LED will stop blinking.



During longer breaks (e.g. recess, lunch):

1. Teacher to turn off the MM2+ by pressing the ON/OFF button until the LED turns red, then release the button.
2. Student to toggle Kanso out of streaming by pressing the Kanso button once quickly. The LED will blink green once.



Alternatively, streaming can be turned off with the Remote Assistant by one quick press on the Telecoil button or by selecting OFF on the Stream screen.



During small group work (up to 5-6 people around a table):

1. Place the MM2+ on a flat surface at the centre of the group.
2. The omni-directional mics on the MM2+ are automatically activated when placed in a horizontal position.

At the end of the school day:

1. Turn off the MM2+ and charge in a safe, dry place.
2. Student to toggle out of streaming.