

Remote Microphone Connection Procedures for the OSIA 2 Sound Processor – Mini-Mic 2+ as Transmitter

1. Pair the Mini Mic to the OSIA.* If Mini Mic has already been paired, skip to Step 3.

***Pairing** needs to be done at the initial set up only. Once the school Mini Mic is paired to the OSIA, pairing holds until another Cochlear accessory (e.g. a home Mini Mic or TV Streamer) is paired to “Channel A” on the OSIA. For this reason, it is recommended that home accessories be paired to Channel B or C on the OSIA.

- a. Turn off the OSIA by opening the battery door.



- b. Turn on the Mini Mic by pressing the ON/OFF button until the LED turns green, then release the button.



- c. With the tip of a ballpoint pen, press the pairing button on the back of the Mini Mic once. The LED will flash yellow. Within 20 seconds, turn on the OSIA by closing the battery door.



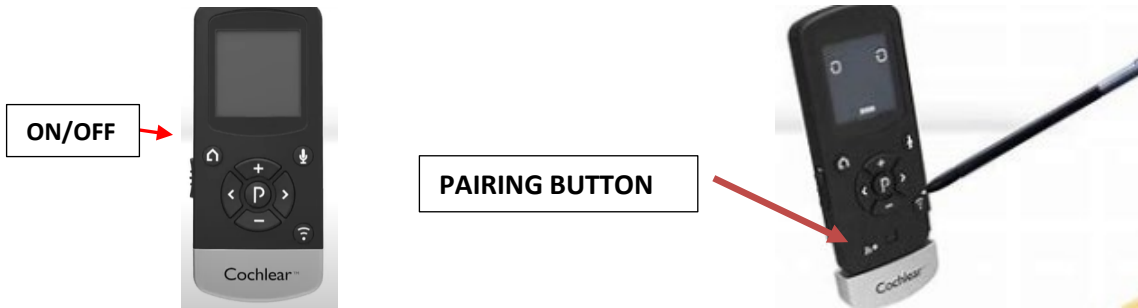
2. Listen for a tune from the OSIA. Mini Mic is now paired.
3. Activate **STREAMING**
 - a. To prevent the processor from automatically turning OFF due to it being off student’s implant for longer than 30 sec, put OSIA back on student’s implant.
 - b. To **STREAM**, press and hold the OSIA button for 3 seconds.
 - c. If streaming is successful, a tune will be heard by the student and visual indicator will blink a long orange followed by a short orange light.



Alternatively, **STREAMING** can be activated with the Remote Control 2 (RC2).

PAIR the Remote Control to the Osia if it is not already paired. Otherwise, skip to step 5.

- 1) Turn ON the RC2 by sliding the side switch down.
- 2) Slide off the bottom cover and press the pairing button with a ballpoint pen or paper clip.



- 3) Within 20 sec, power OFF and ON the Osia while holding it within 4 inches of the RC2 remote.
- 4) Pairing takes about 20 sec. When successfully paired, screen on RC2 will show current Osia volume and program info. The Osia will also play a tune audible to the wearer.



- 5) Activate **STREAMING** on the Osia using the RC2 by pressing the lower right stream button quickly once. A microphone picture at the top indicates Osia in **STREAMING** and ready to receive from the MM2+.



4. Functional check

From a distance of at least 3 meters, cover your lips and speak to the student via the Mini Mic. Ask the student to do things like “point to the windows” or “touch your nose” and check for understanding.

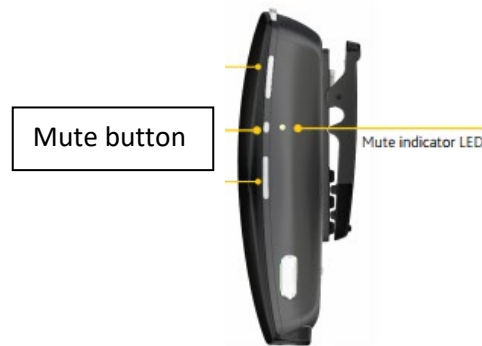
Daily Classroom Routine

Before instruction begins:

1. Teacher to position the Mini Mic about 20 cm below his/her lips by using either the neck loop or clip.
2. Turn on the Mini Mic.
3. Student to activate streaming on the OSIA.
4. Teacher to conduct functional check.

During Instruction Breaks (e.g. individual work time, recess):

1. Teacher to mute the Mini Mic by pressing the Mute button once.
2. LED on Mini Mic will flash orange.



3. When instruction resumes, unmute the Mini Mic by pressing the Mute button once. The LED will stop blinking.

During small group work (up to 5-6 people around a table):

1. Place the Mini Mic on a flat surface at the center of the group.
2. The omni-directional mics on the Mini Mic are automatically activated when placed in a horizontal position.

At the end of the school day:

Turn off the Mini Mic and charge it in a safe, dry place.

There is no need to manually toggle OUT of streaming on the OSIA. Streaming automatically stops when Mini Mic has been turned OFF or MUTED for 5 min or when it is out of range (about 15 meters).