

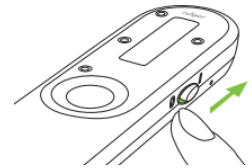
How to generate and start using a Roger receiver in a hearing aid using the Roger On v3:

*Note: if the student is new to RM or the hearing aid is new for the student, receiver generation and verification should be done by an **audiologist** prior to first use.*

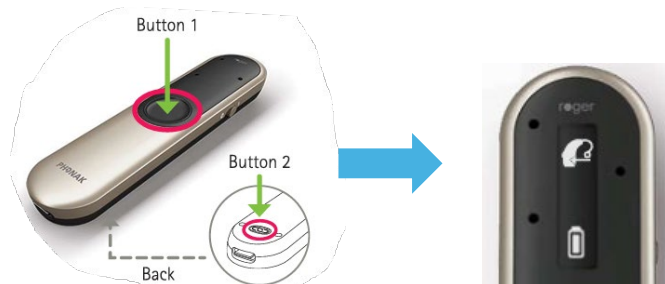
- 1) Ensure hearing aid has Roger Direct technology. The following models by Phonak are compatible: Marvel, Paradise, Lumity, Infinio. The Unitron Blu and DiscoverNext are also compatible.

To prevent interference, ensure no hearing aids or Phonak transmitters/receivers are within 3 metres of the hearing aid you are generating receiver on.

- 2) Power on the Roger On transmitter by sliding the on/off switch to the ON position.



- 3) Push and hold buttons ① and ② at the same time for two seconds.

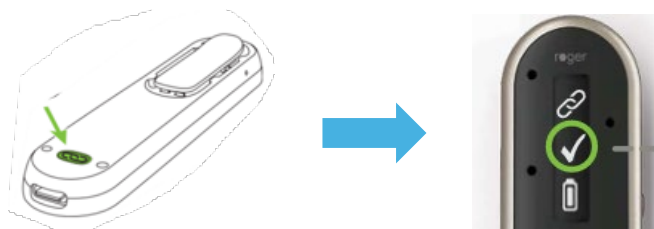


- 4) While holding hearing aid within 1 inch of Roger On, power ON the hearing aid by either closing the battery door (disposable batteries) or pressing and holding the lower button until a green light appears (rechargeable).



- 5) If receiver is successfully generated, a check mark will appear.

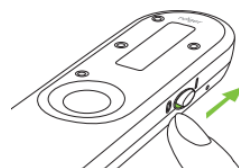
IMPORTANT: Don't forget to **CONNECT** the newly generated receiver before first use! To **CONNECT**, hold Roger ON transmitter within 4 inches of the hearing aid and press the button on the back of the transmitter.



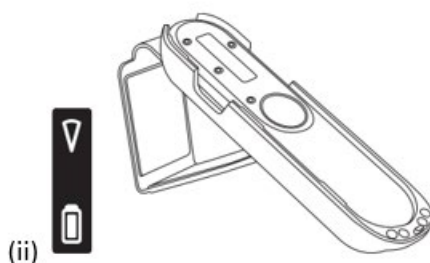
Daily classroom procedures:

In the morning:

1. Power on the hearing aids.
2. Power on the Roger On transmitter by sliding the on/off switch to the ON position.



3. Teacher speaks into the transmitter in one of these three ways:
 - (i) by wearing the transmitter using the lanyard or clip and adjusting the transmitter to 20cm below mouth,
 - (ii) by student propping transmitter up using included case so transmitter is at a 45 degree angle and pointing towards the teacher; transmitter needs to be within 1.5 metres or closer to teacher for sufficient signal-over-noise benefit, OR
 - (iii) by student placing transmitter horizontally on a flat surface; room needs to be quiet and transmitter positioned at no more than 1.5 metres from teacher

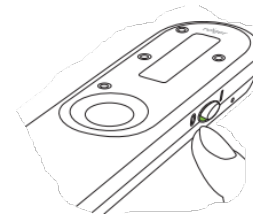


4. Perform *Functional Check*.

➔ From approx. 3-4 metres away from student, speak with a normal conversational voice into the mic while covering your face. Confirm student's understanding, e.g. "*Can you point to the window?*", **NOT** just "*Can you hear me?*".

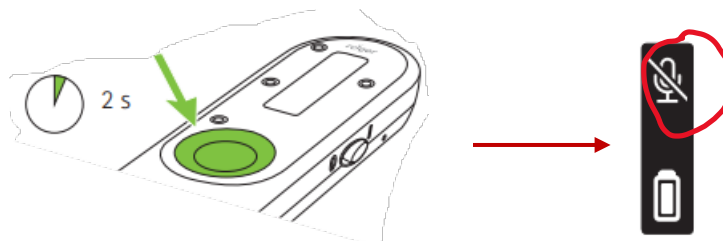
During lunch and class transitions (longer breaks),

1. Turn OFF the transmitter by sliding the ON/OFF switch to the OFF position.



During shorter breaks e.g non-Instruction times (quiet study):

1. *MUTE* microphone on the transmitter by pressing and holding down the function button for 2 seconds.



2. *Remember* to *UNMUTE* the mic when instruction resumes. Unmute by pressing and holding the same button for 2 seconds.

End of the Day:

1. Turn OFF transmitter.
2. Charge transmitter (3 hours for a complete charge; can leave it charging overnight).
3. Store the rest of the RM system (receivers, cables, etc...) in a safe, dry place.

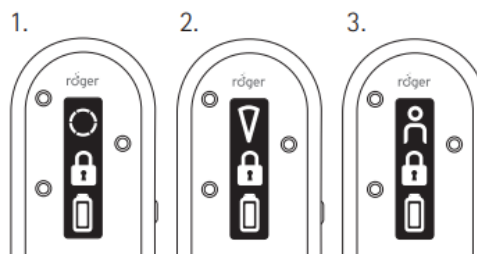
Tips about RM:

→ Remember to either turn OFF or MUTE the transmitter during non-instruction times.

→ Only turn ON/UNMUTE the RM transmitter when the student is in the **same room** as the teacher.

The transmitter microphones are **adaptive directional** and **highly sensitive**.

- Position the transmitter correctly first before turning the transmitter ON or UNMUTE.
- When microphones operate in automatic mode, microphone reception changes with transmitter position. To lock the microphones in one mode independent of transmitter position, press the function button to the desired mode.



1. Table mode
2. Pointing mode
3. Presenter mode

→ If student experiences intermittency or if learning involves frequent small group discussions, installing the **myRogerMic** app is recommended. This app allows users to extend transmission range and when transmitter is placed in table mode, steer microphone beam and localize speakers.